



# Gennargentu

**Directed by:** Daniele Cini and Maurizio Fell

**Produced by:** SD Cinematografica

**Duration:** 30'

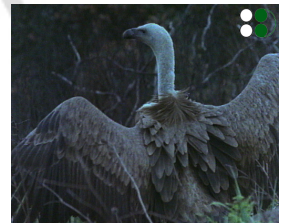
**Versions:**  

**Format:** SD

In the heart of Sardinia there are 60.000 hectares of virgin soil, that will be a national park, in a near future and, just in the centre of this area a mountain rises, Gennargentu. In Italian its name can have two meanings "the door of the wind", because of the strong streams flowing from it all over the island, and "the silver door", for its silver shining rocks, when, in winter, they are completely covered with snow.

There, in an isolated valley, among the calcareous cliffs surrounding the granite massif, an old shepherd is living.

When we met him, the time seemed to stop: he had kept the same way of living and thinking as his ancestors. His name is Natteddu and his house is a sheepfold made up with logs, after the manner of the Indian huts. His stories, sometimes told in a difficult italian, sometimes in his ancient dialect, acted as a background and a guide to our tale. Through his words we could perceive an unexpected sensibility and delicacy for the nature around him, together with a primitive and violent conception of his relationship with the animals "hostile" or "harmful", as he said.



sd cinematografica

worldwide distribution